

**We act. We lead.**  
**WE FLY.**



**BALL STATE  
UNIVERSITY**

# ELEVATE YOUR VIEW.

We give you the tools, skills, and resources you need to fly. That's not empty talk. **That's our promise.**



Our job is to show you what's possible and then help you go for it. Together, we'll dive deep into new ideas and worlds of opportunities you never guessed were out there. Pick any direction you want, and let's go. **That's how We Fly.**



Bring your big dreams  
and prepare for takeoff.

# IT'S ABOUT TO GET REAL.

Here's how we do it: Small classes, world-class professors, and a ton of real experience right away. Through our unique **Immersive Learning** classes and projects, we guide you and then see what you can do. Rest easy; every step of the way, you'll have all the support you need right here. That's Ball State.

With our help, you'll build ideas in our **Entrepreneurship Center**. Cheyenne McMullen won pre-seed funding for her

consulting business. Will Pancake opted to develop his app, Card Genie, and prep it for launch. Our landscape architecture students worked with the City of Muncie and Halteman Village to reimagine the whole neighborhood. Learn. Do. Repeat. Fly.

Remember, this is about passion and opportunity. Ball State people push forward, try new things, and build something different. The bigger you dream, the more **We Fly**.



**22** average class size

**14:1** student-faculty ratio

**TOP 17% OF COLLEGES  
WITH THE BEST PROFS**  
—Niche

**12 LIVING-LEARNING  
COMMUNITIES**

Share your living space with people who share your passions. Mentors. Makerspaces. And incredible resources. Check it out:







**394**  
student-run  
organizations

**30+**  
social fraternities and sororities

**35,614**  
student volunteer service hours  
in just one year

### SEE WHERE YOU'LL LIVE.

Our 11 unique residence halls on campus each have their own vibe with green screen rooms, Glowforges, fitness and game rooms, VR headsets, and more. Check it out:



Hundreds of clubs  
for every interest.



# THIS IS ONLY THE BEGINNING.

Ball State is a community full of builders, idea people, and happiness generators. We have **nearly 400 student organizations and clubs** you can join. You name it, we do it. We've got national fraternities and sororities, dance roller skating, the Afro Dynasty Dance Team, improv comedy, cosplay, culinary club, disc golf, Disc Junkies, even a club for bass fishing. We throw ourselves into it all.

We're hosting sketchbook nights, *Mario Kart* parties, *Rocky Horror* shadow casts, carnival rides, bed races,

and pickle tosses. Head to our multicultural center, grab some ice cream and a comfy chair, and help plan our annual Unity Week. Join thousands of Cardinals for **volunteer community service** in Muncie. Or go all artsy at any of the hundreds of art, music, dance, and theatre events (most free or discounted for you). The experiences are nonstop and in all directions—just the way you want it.





We produce champions here.

# WITH NO PLANS FOR STOPPING.

We are the Cardinals. And we were made to fly. We're championship-winning, All-American-earning highflyers in national competition. We field teams in **19 NCAA Division I sports**. We train, we strive, we go for the goal with all we've got.

Up for some adventure? Check out the 36-foot climbing wall and Outdoor Pursuits programs at our award-winning student rec center. Learn fly fishing, join a whitewater

rafting trip, or take the ravine challenge at Shades State Park. Opt for yoga or play one of our **12 intramural sports** (fantasy football or pickleball?) or **31 club sports**.

We also have (wait for it) **esports** at club and varsity levels. EsportsU named us Program of the Year. We're state-of-the-art, members of the Mid-American Conference and Esports Collegiate Conference, and ready for any challenge.



## CARDINAL TEAMS

Baseball M  
Basketball M/W  
Cross Country W  
Field Hockey W  
Football M  
Golf M/W  
Gymnastics W  
Soccer W  
Softball W  
Swimming & Diving M/W  
Tennis M/W  
Track & Field: Indoor W  
Track & Field: Outdoor W  
Volleyball M/W

**19** Division I sports  
**12** intramural sports  
**31** sport clubs

## 3,611-SQUARE-FOOT ESPORTS CENTER

## ALL ATHLETIC EVENTS ARE FREE.

Just flash your Ball State ID.

## GO PLAY.

Check out our many sport clubs and intramural sports.





This is how  
**WE FLY.**

**ONE OF THE BEST VALUES**

—U.S. News & World Report

**ONE OF THE TOP SCHOOLS FOR  
ENTREPRENEURSHIP STUDIES**

—The Princeton Review

**ONE OF THE TOP PROGRAMS IN  
COMMUNICATION**

—U.S. News & World Report

**ONE OF THE TOP SPORTS  
BROADCASTING SCHOOLS**

—Sportscasters Talent Agency of America

**ONE OF THE TOP DESIGN SCHOOLS**

—Graphic Design USA Magazine

**ONE OF THE MOST HIRED FROM  
INTERIOR DESIGN SCHOOLS AND  
ARCHITECTURE SCHOOLS**

—DesignIntelligence

**ONE OF THE BEST UNDERGRAD  
BUSINESS PROGRAMS IN THE  
MIDWEST**

—Entrepreneur Magazine

**ONE OF THE TOP 30 COLLEGE ACTING/  
PERFORMING ARTS PROGRAMS**

—OnStage Blog

**THE ESPORTS PROGRAM OF THE YEAR**

—EsportsU Collegiate Awards



This is how  
**WE FLY.**



## Loads of majors (110+) taught by amazing professors who take you to new heights.

### Bachelor's Degrees

Accounting\*+  
Actuarial Science  
Advertising (See Strategic Communication)  
Animation (See Visual Arts/Animation)  
Anthropology\*+  
Apparel Design (See Fashion Industry Studies)  
Applied Behavior Analysis/Autism  
Applied Cybersecurity  
Architecture  
Art (Concentrations: Art History, Studio Art)  
Art Education/Teaching  
Astronomy  
Biochemistry  
Biology+ (Concentrations: General Biology, Aquatic Biology and Fisheries, Cellular and Molecular Biology, Field Botany, Genetics, Microbiology, Wildlife Biology and Conservation, Zoology)  
Business Administration\*  
Business Analytics  
Business Information Systems\*  
Chemistry (Concentrations: General Chemistry, American Chemical Society, Biochemistry)  
Chemistry Teaching  
Classical Cultures  
Communication Studies\*+ (Concentrations: Advocacy and Public Communication, Entertainment and Sport Communication, Organizational and Professional Communication, Relational and Interpersonal Communication)  
Computer and Information Technology (Concentrations: Network Infrastructure, Systems Infrastructure)  
Computer Science (Concentrations: General Computer Science, Cybersecurity and Secure Software Design, Data Analytics and Machine Learning, Game Design and Development, Web and Mobile App Development)

Construction Management  
Criminal Justice and Criminology\*+ (Concentrations: General, Corrections and Human Behavior, Psychology and the Legal System, Psychology in Law Enforcement)  
Dance (Concentrations: Commercial Dance, Concert Dance)  
Data Analytics+ (Concentrations: Computational Data Analytics, Environmental Systems Analytics, Health Analytics, Media Analytics, Social and Behavioral Data Analytics)  
Dietetics  
Early Childhood Education/Teaching+  
Early Childhood and Early Childhood Special Education/Teaching (Dual Major)+  
Earth/Space Science Teaching  
Economics\*+ (Concentrations: Business, Liberal Arts—General, Economics and Law, Financial Economics, Health Economics and Public Policy, Political Economy)  
Elementary Education/Teaching+ (Concentrations: American Sign Language, Applied Behavior Analysis, Classical Languages, Differentiation, English as a Second Language, Kindergarten/Primary Education, Language Arts, Mathematics, Modern Languages, Psychology and Counseling, Science, Special Education, Teacher of Reading for Elementary, Technology, Wellness)  
Elementary Education and Special Education, Exceptional Needs Teaching (Dual Major)+  
English+ (Concentrations: Applied Linguistics, Creative Writing, English Studies, Literature, Professional Writing)  
English/Language Arts Teaching+  
Entrepreneurship and Innovation\*  
Environmental Design  
Environmental Geoscience  
Exceptional Needs Teaching+ (Concentrations: Deaf Education, Early Childhood Special Education, Intense Interventions, Mild Interventions)

Exercise Science+ (Concentrations: Athletic Training, Basic and Applied Science, Health and Fitness, Pre-Occupational Therapy, Pre-Physical Therapy)  
Family and Child (Concentrations: Child Life, Early Care, Early Intervention, Family Science)  
Fashion Industry Studies  
Finance\* (Concentrations: Business Finance, Financial Analyst)  
Forensic Science (Concentrations: Behavioral Forensics, Digital Forensics, Forensic Biology, Forensic Chemistry)  
French Modern Language  
French Modern Language Teaching  
General Studies  
Geography (Concentrations: Geographic Information Science, Meteorological Studies, Tourism and Human Geography)  
Geology  
Graphic Communications Management  
Graphic Design+  
Graphic Design Studies  
History\* (Concentrations: General History, Public History)  
Hospitality Innovation and Leadership  
Interior Design  
Japanese Modern Language  
Japanese Modern Language Teaching  
Jazz Studies  
Journalism+ (Concentrations: Journalism, Mass Communication, Photographic Storytelling, Sports Writing and Multimedia Storytelling, Strategic Communication, Student Media, Writing and Multimedia Storytelling)  
Journalism Teaching+  
Landscape Architecture  
Legal Studies (Concentrations: Business Law, Public Law)

Life Science Teaching  
Logistics and Supply Chain Management\*  
Management and Leadership  
Marketing\*  
Mathematical Economics  
Mathematics+ (Concentrations: Applied Mathematics, Mathematics)  
Mathematics Teaching (Concentrations: Middle School, Secondary School)  
Media+ (Concentrations: Broadcast and Multimedia News, Film and Media Studies, Media Promotion and Management, Production, Sports Production, Sports Reporting, Visual Effects and Motion Graphics Production)  
Media Design and Development+  
Medical Lab Science  
Meteorology and Climatology  
Modern Languages: Multi-Language (Concentrations: Arabic, Chinese, French, German, Japanese, Spanish)  
Music (Concentrations: Applied Music, Music Creation and Composition, Music Exploration, Music Industry)  
Music Education (Concentrations: Instrumental and General, Vocal and General, Dual Instrumental with Vocal Add-on, Dual Vocal with Instrumental Add-on)  
Music Media Production (Concentrations: Audio Engineering Technology, Commercial Music Design, Game and Media Sound Design)  
Music Performance (Concentrations: Guitar, Jazz, Organ, Piano, Symphonic Instruments: Strings, Symphonic Instruments: Winds, Brass, and Percussion, Voice)  
Natural Resources and Environmental Management (Concentrations: Environmental Management, Natural Resources)  
Nursing\* (Pre-Licensure)  
Nutrition (See Dietetics)  
Philosophy\*  
Physical Education and Health/Teaching  
Physics  
Physics Teaching

Political Science\* (Concentrations: American Government and Politics, Global Politics and International Affairs, Public and Nonprofit Administration)  
Professional Selling  
Property Management  
Psychological Science\*+  
Public Health+  
Public Relations (See Strategic Communication)  
Religious Studies\*  
Respiratory Therapy  
Risk Management and Insurance\*  
Sales (See Professional Selling)  
Social Studies Teaching (Concentrations: Economics, Geography, Government/Political Science, Psychology, Sociology)  
Social Work\*+  
Sociology\*+ (Concentrations: Diversity, Health and Populations)  
Spanish Modern Language  
Spanish Modern Language Teaching  
Special Education (See Exceptional Needs Teaching)  
Speech Pathology and Audiology  
Sport Administration+  
Strategic Communication+ (Concentrations: Advertising, Advertising Sales, Communication Studies, Creative AI Management and Strategies, Emerging Media, Event Planning and Management, Media Presentation and Design, Public Relations, Sports)  
Studio Art  
Theatre (Concentrations: Acting, Design and Technology, Directing/Stage Management, Musical Theatre, Theatre Creation)  
Theatre Teaching  
Urban Planning and Development+  
Visual Arts/Animation (Concentrations: Animation Production, Game Art/Design, Illustration, VFX Animation)  
Women's and Gender Studies\*

**Preprofessional Education**  
Pre-Audiology  
Pre-Chiropractic (Nondegree)  
Pre-Dentistry\*  
Pre-Engineering  
Pre-Law (Nondegree)  
Pre-Medicine\*+  
Pre-Occupational Therapy (Concentration)  
Pre-Optometry (Nondegree)  
Pre-Pharmacy (Nondegree)  
Pre-Physical Therapy (Concentration)  
Pre-Physician's Assistant (Nondegree)  
Pre-Veterinary (Nondegree)

### Associate Degrees

Criminal Justice and Criminology  
General Studies  
Radiography

**\*Degree in 3**—Major may be completed in three years by taking Summer classes.

**+Accelerated Master's Program (AMP)**—Qualified students may begin a graduate degree early while completing major.

**Note:** Program list is accurate as of July 15, 2025. The most current information is available at [bsu.edu/catalog](https://bsu.edu/catalog).

### EXPLORE MAJORS.





One of the

# BEST COLLEGE CAMPUSES

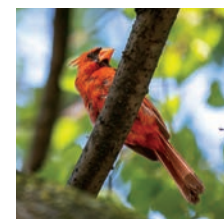
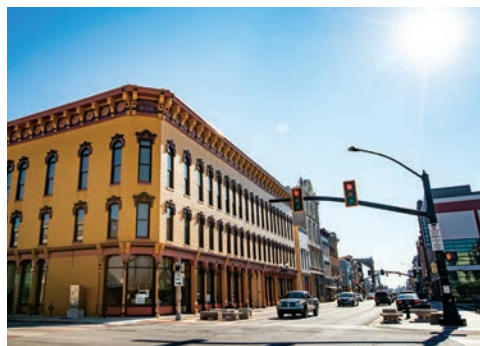
in America.

This is 1,213 acres of whoa. Naturally, you'll want to see for yourself. We suggest that you **book a campus visit** sooner rather than later.

When you do, here's what you'll see: This place blows the competition away. Gorgeous campus. Cutting-edge facilities. Cool funky sculptures. Our **David Letterman Communication and Media Building** is home to incredible production facilities, Indiana Public Radio, and WCRD-FM, our student-run radio station. We have nine

recording studios, a sonic arts media lab, a "naked lady" in the library, Indiana's largest planetarium, performance halls, a farm, and an orchid greenhouse. Our campus is nationally accredited as an arboretum.

Ball State is located just an hour away from Indianapolis in Muncie, Indiana, an **All-America City award winner**. This is a place of big life, experiences, and resources. You want to be someplace that matters and where you matter? This is it.



**TOP 9% OF COLLEGE DORMS**

**TOP 10% IN COLLEGE FOOD**

**TOP 19% OF COLLEGE CAMPUSES**

—Niche

## FOOD AND ROBOTS

BBQ, custom allergen-free bowls, stir-fry, oatmeal bar, grab-and-go sushi, and breakfast served all day. Your own nutritionist. And delivery robots (yes, robots!), too. Check out all the options:





Comedy legends, pop culture icons,  
corporate titans, and nonprofit heroes.

# WE GRADUATE THEM ALL.

**This is your future, your way.** Kayla Davion graduated from Ball State and went straight to Broadway. Jess Melvin went from a K-pop stylin' thesis to a Fulbright in South Korea. And Chayce McDermott was drafted by the Houston Astros. Other Cardinals have gone on to become the CEOs of Burberry, UPS, and United Way Worldwide.

Our grads are choreographers, reporters, urban planners and fashion forecasters, game developers, wildlife conservationists, artists and teachers, Grammy, Emmy, and Oscar winners. They get picked by the NFL, NBA, and MLB. They are the people who make big things happen. **How will you fly?**

▲ Open up for more.



Comedy legends, pop culture icons,  
corporate titans, and nonprofit heroes.

# WE GRADUATE THEM ALL.

**This is your future, your way.** Kayla Davion graduated from Ball State and went straight to Broadway. Jess Melvin went from a K-pop stylin' thesis to a Fulbright in South Korea. And Chayce McDermott was drafted by the Houston Astros. Other Cardinals have gone on to become the CEOs of Burberry, UPS, and United Way Worldwide.

Our grads are choreographers, reporters, urban planners and fashion forecasters, game developers, wildlife conservationists, artists and teachers, Grammy, Emmy, and Oscar winners. They get picked by the NFL, NBA, and MLB. They are the people who make big things happen. **How will you fly?**

## Let's talk costs, financial aid, and scholarships.

We want you here with us. That's why we work hard to keep our costs competitive and our financial aid and scholarships high.

### Okay, how much does it cost?

It depends—on a variety of things like financial aid, scholarships, grants, even student employment. Every financial package is custom to the individual.

Estimated 2025–26 Academic Year COSTS FOR NEW STUDENTS*		
	Indiana Residents	Out-of-State Residents
Tuition (12–18 credits per semester)**	\$8,948	\$27,496
Food (21 meals per week)***	\$6,732	\$6,732
Housing (standard double room)***	\$5,648	\$5,648
Student Services Fee	\$1,454	\$1,454
University Technology Fee	\$300	\$300
Health Center Fee	\$206	\$206
Recreation Center Fee	\$174	\$174
Residence Hall Technology Fee***	\$200	\$200
TOTAL FIXED COSTS	\$23,662	\$42,210

Additional expenses (estimated):  
Books/supplies, \$782; personal expenses/transportation, \$2,700 to \$3,700.

### Cost Notes:

- \* Cost information is based on full-time, on-campus enrollment for the Fall and Spring semesters.
- \*\* Additional course or program fees may apply, depending on major and course schedule.
- \*\*\* Actual housing and food costs may vary depending on the type of room and meal plan requested. Detailed rates and options are available at [bsu.edu/housing/rates](https://www.bsu.edu/housing/rates).

The Board of Trustees reserves the right to change the fees or charges for any semester or session.

SEE YOUR FULL  
COST OF ATTENDANCE  
based on your student status:



## Five ways we can help with your tuition:

The first step is to submit your Free Application for Federal Student Aid (FAFSA) at [studentaid.gov](https://studentaid.gov).

### 1. GRANTS

Grants are usually based on your financial need and don't require repayment. Good news—you're automatically considered for grants when you file your FAFSA.

### 2. SCHOLARSHIPS

You're automatically considered for multiyear scholarships to reward big talent, leadership, and academic achievement.

### 3. LOANS

Find out if you qualify for low-interest loans by filing your FAFSA. Loans do require repayment.

### 4. WORK-STUDY

Our Career Center helps you find on-campus or off-campus work. Federal Work-Study matches you with part-time employment during the school year.

### 5. VETERANS BENEFITS

We work with the U.S. Department of Veterans Affairs and the State of Indiana to help you get the most out of veteran education benefits available to you.



## MIDWEST DISCOUNTS

Save even more money with our major tuition discounts for eligible out-of-state students:  
Regional Tuition Savings (KY, OH)  
Midwest Regional Scholarship (IL, MI)  
Midwest Student Exchange Program (KS, MN, MO, ND, NE, WI)

## TALK TO US.

Questions about financial aid?  
Call: 765-285-2222  
Email: [cardinalcentral@bsu.edu](mailto:cardinalcentral@bsu.edu)

**95%** of new freshmen qualify for financial aid.

**\$13,897**

the average amount of grants and scholarships awarded to qualified new freshmen

## NET PRICE CALCULATOR

This takes about eight minutes, but it's a big help in estimating and understanding what you'll need to fly at Ball State.



## SCHOLARSHIP CALCULATOR

Type in your GPA and SAT/ACT scores (optional) to see which merit-based scholarships you may qualify for.





# WE ARE THE TOP CAMPUS



## for EVERYONE.

College Magazine named us the **No. 1 campus for students with physical disabilities**. We work hard to make this campus work for everyone because there should never be limits on what you can achieve, do, or dream here.

Next up, we're guided by **Beneficence**. It's more than a winged statue on campus we call "Benny." It's our reminder to live with generosity and to hold ourselves to a higher standard. It's what powers our "We Fly" mindset. It's what lifts us up and teaches us that it's possible to elevate every life.

When you need help, we're there—tutoring, wellness check-ins, mentoring, and insight. Because when you fly, **We Fly**.



### **BENEFICENCE IN ACTION:**

We pledge to maintain high standards of scholarship and excellence, to practice academic honesty, to act in a socially responsible way, and to value the intrinsic worth of every member of our community.

### **MEET FROG BABY.**

Students routinely loan her bits and pieces of their own clothing, like shirts, hats, and festive scarves. Visit her near Bracken Library.





We have one question:

# ARE YOU READY TO FLY?

VISIT.



CONNECT.



EXPLORE.



## Higher Access, Higher Earnings

At Ball State, we excel at helping students from all backgrounds access a quality college education. And after graduation, they **earn more than their peers** in similar job markets. In fact, we're one of only 27 colleges and universities nationally—and the only one in Indiana—to gain Carnegie Classifications for both student success and high-impact research. **Opportunity takes flight here.**



# FIND YOUR WAY TO FLY.



**BALL STATE  
UNIVERSITY**

Office of Admissions

2000 W. University Ave.  
Muncie, IN 47306  
800-482-4278

Email: [askus@bsu.edu](mailto:askus@bsu.edu)  
[bsu.edu/ballstatebound](http://bsu.edu/ballstatebound)



@BallStateBound

To see how, follow us  
**@BallStateBound.**  
Stories. Updates.  
Cool stuff. You'll love it.



The information presented here, correct at the time of publication, is subject to change. Ball State University practices equal opportunity in education and employment.

Ball State wants its programs and services to be accessible to all people. For information about access and accommodations, please call the Office of Disability Services at 765-285-5293; go through Relay Indiana for deaf or hard-of-hearing individuals ([relayindiana.com](http://relayindiana.com) or 877-446-8722); or visit [bsu.edu/disabilityservices](http://bsu.edu/disabilityservices).

MC-75084-25